

# SketchUp and Lumion (Complete Project Development-Architectural Animation)



**University of Global Village (UGV),  
Barishal**

COURSE INFORMATION			
Course Title	SketchUp and Lumion (Complete Project Development-Architectural Animation)	Lecture ContactHours	5.00
Covered Lab	Civil Engineering Drawing –II Sessional (3 <sup>rd</sup> )		
PRE-REQUISITE			
<b>SketchUp and Lumion 1,2,3</b>			

No.	Course Outcomes
CO1	<b>Determine</b> diverse layouts and interpreting different results accurately.
CO2	<b>Analyze</b> plan and model characteristics and behavior under different conditions.
CO3	<b>Apply</b> software knowledge to solve engineering problems effectively.
CO4	<b>Plan</b> effectively to work individually and in a group.

SI	Content of Course	Class Time (hr)	CLOs
01	<b>Residential Community Complex Project</b> <ul style="list-style-type: none"> <li>• Essential components of a residential area</li> <li>• Efficient layout plan of the project</li> <li>• 3D modeling</li> <li>• Rendering</li> </ul>	03	CLO1, CLO2, CLO3, CLO4
02	<b>Resort and villas Project</b> <ul style="list-style-type: none"> <li>• Essential components of a resort complex</li> <li>• Efficient layout plan of the project</li> <li>• 3D modeling</li> <li>• Rendering</li> </ul>	03	CLO1, CLO2, CLO3, CLO4

03	<b>University Campus Area Project</b> <ul style="list-style-type: none"> <li>• Essential components of a university</li> <li>• Efficient layout plan of the project</li> <li>• 3D modeling</li> <li>• Rendering</li> </ul>	03	CLO1, CLO2, CLO3, CLO4
04	<b>Industrial Area Project</b> <ul style="list-style-type: none"> <li>• Essential components of an industrial area</li> <li>• Efficient layout plan of the project</li> <li>• 3D modeling</li> <li>• Rendering</li> </ul>	03	CLO1, CLO2, CLO3, CLO4
05	<b>Airport Project</b> <ul style="list-style-type: none"> <li>• Essential components of an airport</li> <li>• Efficient layout plan of the project</li> <li>• 3D modeling</li> <li>• Rendering</li> </ul>	03	CLO1, CLO2, CLO3, CLO4

Week	Topic	Teaching Learning Strategy	Assessment Strategy	Corresponding CLOs
01-03	<b>Residential Community Complex Project</b>	Lecture, Oral presentation, Software demonstration	Lab Test, Quiz, Report, Presentation	CLO1
04-06	<b>Resort and villas Project</b>	Lecture, Oral presentation, Software demonstration	Lab Test, Quiz, Report, Presentation	CLO2, CLO3, CLO4
07-09	<b>University Campus Area Project</b>	Lecture, Oral presentation, Software demonstration	Lab Test, Quiz, Report, Presentation	CLO2, CLO3, CLO4
10-12	<b>Industrial Area Project</b>	Lecture, Oral presentation, Software demonstration	Lab Test, Quiz, Report, Presentation	CLO2, CLO3, CLO4
13-15	<b>Airport Project</b>	Lecture, Oral presentation, Software demonstration	Lab Test, Quiz, Report, Presentation	CLO2, CLO3, CLO4

## REFERENCEBOOKS

1. SketchUp for Dummies: Aidan Chopra
2. SketchUp for Site Design: A Guide to Modeling Site Plans, Terrain, and Architecture: Daniel Tal
3. SketchUp for Builders: A Comprehensive Guide for Creating 3D Building Models Using SketchUp: John Brock
4. SketchUp for Interior Design: Various Authors
5. Mastering Lumion 3D: Ciro Cardoso
6. Lumion 3D Cookbook: Ciro Cardoso

# **Project 1**

**Residential Community Complex Project**

A residential community complex is a self-contained development offering a variety of housing options and amenities. Here are some key components:

### Residential Buildings:

- **Apartments:** Varying sizes and configurations to suit different needs and budgets.



[Opens in a new window](#)



[doingmoretoday.com](http://doingmoretoday.com)

Apartment Buildings in a Residential Community Complex

- **Townhouses:** Multi-story units with private entrances and often some outdoor space.



[Opens in a new window](#)



[www.rocketmortgage.com](http://www.rocketmortgage.com)

Townhouses in a Residential Community Complex

- **Single-Family Homes:** Detached houses with private yards and garages.



[Opens in a new window](#)



[www.multihousingnews.com](http://www.multihousingnews.com)

SingleFamily Homes in a Residential Community Complex

### Community Facilities:

- **Clubhouse:** A central gathering space with amenities like a fitness center, pool, party room, and business center.



[Opens in a new window](#)  [www.homes247.in](http://www.homes247.in)

Clubhouse in a Residential Community Complex

- **Parks and Green Spaces:** Playgrounds, walking trails, gardens, and open areas for recreation and relaxation.



[Opens in a new window](#) R<sup>6</sup>

[www.researchgate.net](http://www.researchgate.net)

### Parks and Green Spaces in a Residential Community Complex

- **Retail and Dining:** Convenience stores, cafes, restaurants, and other retail outlets within the complex.



[Opens in a new window](#)  [www.d3i-usa.com](http://www.d3i-usa.com)

### Retail and Dining in a Residential Community Complex

- **Security Features:** Gated entry, surveillance systems, and on-site security personnel to ensure safety and peace of mind.



[Opens in a new window](#)  [grabtheaxe.com](http://grabtheaxe.com)



## Security Features in a Residential Community Complex

### Infrastructure:

- **Roads and Parking:** Well-maintained roads, sidewalks, and ample parking spaces for residents and guests.



[Opens in a new window](#)



[www.civicdesigncenter.org](http://www.civicdesigncenter.org)

### Roads and Parking in a Residential Community Complex

- **Utilities:** Reliable water, electricity, gas, and internet services.



[Opens in a new window](#)



[complexe-tanger-](#)

[boulevard.com](http://boulevard.com)

### Utilities in a Residential Community Complex

- **Waste Management:** Efficient waste collection and disposal systems.



[Opens in a new window](#)



[www.cleanindiatech.com](http://www.cleanindiatech.com)

Waste Management in a Residential Community Complex

#### Additional Features (May Vary):

- **Pet-friendly amenities:** Dog parks, grooming stations
- **Educational facilities:** Schools or daycare centers
- **Healthcare facilities:** Clinics or medical offices
- **Community gardens:** Shared spaces for residents to grow their own produce

#### Diagram of Residential Community Complex Components:



[Opens in a new window](#)



[www.pinterest.com](http://www.pinterest.com)

Diagram of Residential Community Complex Components

The specific components and amenities of a residential community complex can vary depending on the size, location, and target market. However, the overall goal is to create a self-contained and convenient living environment that offers a high quality of life for its residents.

# **Project 2**

**Resort and villas Project**

## Resort Components

### Accommodation:

- **Hotel Rooms:** A range of room types, from standard to suites, offering varying levels of comfort and amenities.



[Opens in a new window](#)



[www.opalcollection.com](http://www.opalcollection.com)

Hotel Rooms in a Resort

- **Villas:** Independent units with private pools, gardens, and enhanced privacy.



[Opens in a new window](#)



[www.totstoo.com](http://www.totstoo.com)

Villas in a Resort

### Food and Beverage:

- **Restaurants:** Offering diverse cuisines, from casual dining to fine dining.



[Opens in a new window](#)



[www.viceroyhotelsandresorts.com](http://www.viceroyhotelsandresorts.com)

Restaurants in a Resort

- **Bars and Lounges:** Providing a relaxed atmosphere for drinks and socializing.



[Opens in a new window](#)



[www.alamy.com](http://www.alamy.com)

Bars and Lounges in a Resort

**Recreation and Leisure:**

- **Pools:** Swimming pools, including infinity pools, children's pools, and activity pools.



[Opens in a new window](#)



[www.omnihotels.com](http://www.omnihotels.com)

Pools in a Resort

- **Spa and Wellness Center:** Offering a range of treatments, massages, and relaxation therapies.



[Opens in a new window](#)



[hospitalityinsights.ehl.edu](http://hospitalityinsights.ehl.edu)

Spa and Wellness Center in a Resort

- **Fitness Center:** Equipped with modern exercise equipment.



[Opens in a new window](#)



[www.oceanplace.com](http://www.oceanplace.com)

Fitness Center in a Resort

- **Beach Access:** Direct access to the beach, with beach chairs, umbrellas, and water sports.



[Opens in a new window](#)



[www.oceanplace.com](http://www.oceanplace.com)

Beach Access in a Resort

- **Other Activities:** Depending on the resort's location and theme, activities may include golf, tennis, water sports, hiking, biking, and cultural excursions.

### Conference and Meeting Facilities:

- **Meeting Rooms:** Equipped with audiovisual equipment for business meetings, conferences, and events.





[Opens in a new window](#)  [www.anantara.com](http://www.anantara.com)

### Meeting Rooms in a Resort

- **Ballrooms:** Large spaces for banquets, weddings, and other special events.



[Opens in a new window](#)  [www.sunwayhotels.com](http://www.sunwayhotels.com)

### Ballrooms in a Resort

### Support Facilities:

- **Front Desk and Reception:** Handling guest check-in, check-out, and inquiries.



[Opens in a new window](#)  [www.istockphoto.com](http://www.istockphoto.com)



## Front Desk and Reception in a Resort

- **Concierge Services:** Assisting guests with travel arrangements, tours, and other requests.
- **Security:** Ensuring the safety and security of guests and property.
- **Maintenance and Housekeeping:** Maintaining the cleanliness and upkeep of the resort.

### Diagram of Resort Components:



[Opens in a new window](#)  [www.researchgate.net](http://www.researchgate.net)

Diagram of Resort Components

The specific components of a resort can vary depending on its location, target market, and overall theme. However, the goal is to provide a comprehensive and enjoyable experience for guests, combining luxurious accommodations, exceptional service, and a range of recreational and leisure activities.

# **Project 3**

**University Campus Area Project**

## Academic Buildings:

- **Classrooms:** Lecture halls, seminar rooms, and specialized classrooms for subjects like science labs, art studios, and computer labs.



[Opens in a new window](#)



[classrooms.uiowa.edu](https://classrooms.uiowa.edu)

Classrooms in a University Campus

- **Lecture Halls:** Large rooms designed for lectures and presentations.



[Opens in a new window](#)



[en.wikipedia.org](https://en.wikipedia.org)

Lecture Halls in a University Campus

- **Libraries:** Central libraries and departmental libraries, providing access to books, journals, and digital resources.



[Opens in a new window](#)



[www.topmastersineducation.com](http://www.topmastersineducation.com)

Libraries in a University Campus

### Student Facilities:

- **Student Center:** A hub for student life, often including dining halls, student lounges, game rooms, and student organization offices.



[Opens in a new window](#)



[uh.edu](http://uh.edu)

Student Center in a University Campus

- **Dormitories and Residential Halls:** On-campus housing options for students.



[Opens in a new window](#)  [www.clarku.edu](http://www.clarku.edu)

### Dormitories in a University Campus

- **Dining Halls and Cafeterias:** Providing a variety of meal options for students.



[Opens in a new window](#)  [thevarsity.ca](http://thevarsity.ca)

### Dining Halls in a University Campus

- **Student Union:** A space for student organizations to meet and host events.



[Opens in a new window](#)  [studentunion.utk.edu](http://studentunion.utk.edu)

### Student Union in a University Campus

- **Health Center:** Providing basic medical care and health services to students.



[Opens in a new window](#)

[facilities.princeton.edu](https://facilities.princeton.edu)

Health Center in a University Campus

- **Counseling Services:** Offering mental health and academic counseling services to students.



[Opens in a new window](#)



[counseling.uiowa.edu](https://counseling.uiowa.edu)

Counseling Services in a University Campus

### **Administrative Buildings:**

- **Administration Building:** Housing administrative offices, including the president's office, registrar's office, and financial aid office.



[Opens in a new window](#)



[www.designcollective.com](http://www.designcollective.com)

Administration Building in a University Campus

- **Faculty Offices:** Providing office space for faculty members.



[Opens in a new window](#)



[www.chronicle.com](http://www.chronicle.com)

Faculty Offices in a University Campus

### **Research Facilities:**

- **Research Laboratories:** Specialized laboratories for scientific research and experimentation.





[Opens in a new window](#)  [www.bu.edu](http://www.bu.edu)

### Research Laboratories in a University Campus

- **Research Centers:** Dedicated centers for interdisciplinary research and collaboration.



[Opens in a new window](#)  [cos.northeastern.edu](http://cos.northeastern.edu)

### Research Centers in a University Campus

### Campus Grounds:

- **Green Spaces:** Lawns, gardens, and parks for relaxation and outdoor activities.



[Opens in a new window](#)  [source.colostate.edu](http://source.colostate.edu)



## Green Spaces in a University Campus

- **Walking and Biking Paths:** Providing pedestrian and cycling routes across the campus.



[Opens in a new window](#)

[transportation.uw.edu](https://transportation.uw.edu)

## Walking and Biking Paths in a University Campus

- **Athletic Facilities:** Sports fields, gymnasiums, and fitness centers.



[Opens in a new window](#)



[www.2adays.com](http://www.2adays.com)

## Athletic Facilities in a University Campus

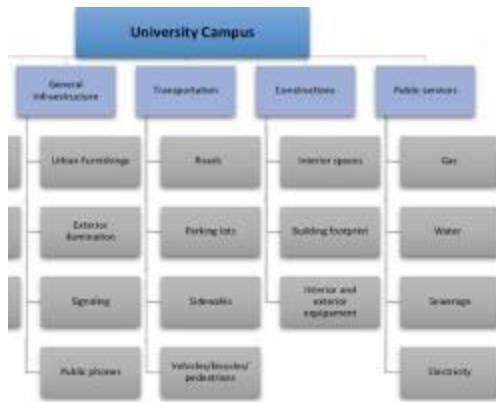
- **Parking Lots and Garages:** Providing parking spaces for students, faculty, and staff.



[Opens in a new window !\[\]\(529949c2c3dadbaa4e538e8c643454bc\_img.jpg\) www.marquette.edu](http://www.marquette.edu)

### Parking Lots and Garages in a University Campus

#### Diagram of University Campus Area Components:



[Opens in a new window !\[\]\(339a16584d5da0f0a3ca4e9ec17bf6a1\_img.jpg\) www.researchgate.net](http://www.researchgate.net)

#### Diagram of University Campus Area Components

The specific components of a university campus can vary depending on the size, type, and mission of the institution. However, the overall goal is to create a vibrant and supportive learning environment that fosters academic excellence and student success.

# **Project 4**

**Industrial Area Project**

## Key Components of an Industrial Area Project

An industrial area is a designated zone for industrial activities, typically encompassing various essential components:

### 1. Infrastructure:

- **Roads and Transportation:** Well-maintained roads, highways, and potentially rail or water access for efficient transportation of raw materials and finished goods.



[Opens in a new window](#) R<sup>6</sup>

[www.researchgate.net](http://www.researchgate.net)

### Roads and Transportation in Industrial Area

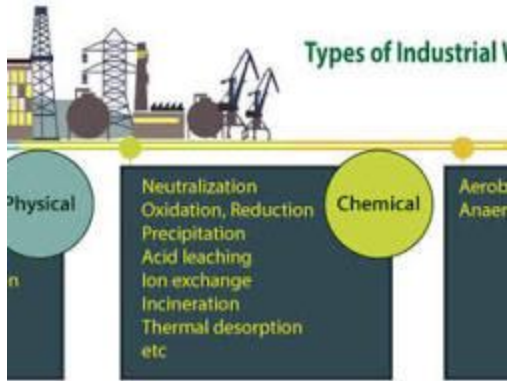
- **Utilities:** Reliable supply of electricity, water, natural gas, and telecommunications services.



[Opens in a new window](#)  [www.eci.us](http://www.eci.us)

### Utilities in Industrial Area

- **Waste Management:** Effective systems for solid waste disposal, wastewater treatment, and pollution control.



[Opens in a new window www.era-](http://www.era-environmental.com)

[environmental.com](http://environmental.com)

Waste Management in Industrial Area

## 2. Industrial Buildings and Facilities:

- **Factories and Manufacturing Plants:** Structures designed for various industrial processes, including assembly, production, and warehousing.



[Opens in a new window scoutcities.com](http://scoutcities.com)

Factories and Manufacturing Plants in Industrial Area

- **Warehouses and Distribution Centers:** Facilities for storing and distributing goods.



[www.opus-group.com](http://www.opus-group.com)

[Opens in a new window](#)  [www.opus-](http://www.opus-group.com)

Warehouses and Distribution Centers in Industrial Area

- **Research and Development Centers:** Facilities for research, innovation, and product development.



[Opens in a new window](#)  [medicofarma.pl](http://medicofarma.pl)

Research and Development Centers in Industrial Area

### 3. Support Services:

- **Administrative Offices:** Providing space for business operations, including management, finance, and human resources.



[Opens in a new window](#)



[www.algeco.cz](http://www.algeco.cz)

#### Administrative Offices in Industrial Area

- **Labor Supply:** Availability of skilled and unskilled labor to meet the needs of industries.
- **Financial Services:** Access to banking, insurance, and other financial institutions.
- **Security:** Adequate security measures to protect property and personnel.

#### 4. Environmental Considerations:

- **Pollution Control:** Measures to minimize air, water, and noise pollution.



[Opens in a new window](#)



[a-otc.com](http://a-otc.com)

#### Pollution Control in Industrial Area

- **Environmental Impact Assessment:** Assessment of the potential environmental impact of the industrial area and implementation of mitigation measures.



ENVIRONMENTAL IMPACT ASSESSMENT  
OF INDUSTRIAL DEVELOPMENT AROUND LUMBINI,  
THE BIRTHPLACE OF THE LORD BUDDHA, WORLD HERITAGE PROPERTY



[Opens in a new window](#)

[unesdoc.unesco.org](https://unesdoc.unesco.org)

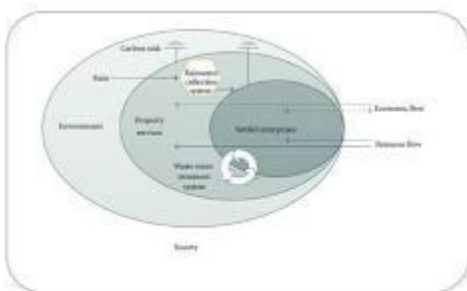
### Environmental Impact Assessment in Industrial Area

- **Sustainable Practices:** Encouraging the adoption of sustainable practices, such as energy efficiency and waste reduction.

### 5. Social and Economic Factors:

- **Economic Development:** Creating jobs and contributing to economic growth.
- **Community Development:** Providing opportunities for local businesses and improving the quality of life for nearby communities.
- **Social Responsibility:** Addressing social issues related to the industrial area, such as worker safety and community impact.

### Diagram of Industrial Area Components:



Environmental pollution  
 (1) Resource base  
 (2) Resource base

[Opens in a new window](#)  [www.researchgate.net](https://www.researchgate.net)

### Diagram of Industrial Area Components

The specific components of an industrial area can vary depending on the type of industries, the local context, and the overall development plan. However, a well-planned industrial area should provide a conducive environment for businesses to thrive while minimizing negative impacts on the environment and surrounding communities.



# **Project 5**

**Airport Project**

## Key Components of an Airport Project

An airport project involves a complex interplay of various components, each crucial for its successful execution. Here's a breakdown of the key elements:

### 1. Airfield Infrastructure:

- **Runways:** The primary paved surfaces for aircraft takeoff and landing.



[Opens in a new window](#)  [airplanning.com](http://airplanning.com)

Airport Runway

- **Taxiways:** Paved paths connecting runways to terminals, hangars, and other airport facilities.



[Opens in a new window](#) 

[flighttrainingcentral.com](http://flighttrainingcentral.com)

Airport Taxiway

- **Aprons:** Paved areas in front of terminals where aircraft park for loading, unloading, and refueling.



[Opens in a new window](#)  [en.wikipedia.org](https://en.wikipedia.org)

Airport Apron

## 2. Terminal Buildings:

- **Passenger Terminals:**
  - Check-in counters
  - Baggage claim
  - Security checkpoints
  - Gates
  - Retail and dining areas
  - Restrooms and lounges



[www.britannica.com](http://www.britannica.com) [Opens in a new window](#) 

Airport Terminal Building

- **Cargo Terminals:**
  - Facilities for handling and storing cargo.



[Opens in a new window](#)



[www.lodige.com](http://www.lodige.com)

Airport Cargo Terminal

### 3. Air Traffic Control (ATC) Systems:

- **Control Tower:** A structure housing air traffic controllers who guide aircraft on the ground and in the air.



[Opens in a new window](#)



[wikipedia.org](http://wikipedia.org)

Airport Control Tower

- **Radar Systems:** Used by ATC to monitor aircraft movements.
- **Communication Systems:** Ensuring clear communication between ATC, pilots, and ground personnel.

### 4. Support Facilities:

- **Hangars:** Structures for aircraft storage, maintenance, and repair.



[Opens in a new window](#)



[air-pros.com](http://air-pros.com)

Airport Hangar

- **Fire and Rescue Stations:** Providing emergency response services.



[Opens in a new window](#)



[www.volusia.org](http://www.volusia.org)

Airport Fire and Rescue Station

- **Ground Support Equipment (GSE):** Vehicles and equipment for aircraft maintenance, loading, and unloading.



[Opens in a new window](#)



[startpac.com](http://startpac.com)

Airport Ground Support Equipment

- **Parking Garages:** For passenger and employee vehicles.
- **Fueling Facilities:** For refueling aircraft.

## 5. Infrastructure and Utilities:

- **Roads and Highways:** For access to the airport.
- **Utilities:** Reliable power, water, and communication systems.
- **Drainage and Sewage Systems:** To manage stormwater and wastewater.

## 6. Environmental Considerations:

- **Noise Mitigation:** Measures to reduce aircraft noise impact on surrounding communities.
- **Air and Water Quality:** Measures to minimize pollution.
- **Environmental Impact Assessment (EIA):** Assessing the project's potential environmental impact and implementing mitigation measures.

## 7. Safety and Security:

- **Security Systems:** Implementing security measures to protect passengers, personnel, and aircraft from threats.
- **Emergency Response Plans:** Developing and implementing emergency plans to handle various scenarios, such as accidents and natural disasters.

## Diagram of Airport Project Components:



[Opens in a new window](#)  [en.wikipedia.org](https://en.wikipedia.org)

Diagram of Airport Project Components

The specific components and their scale will vary depending on the size and scope of the airport project. However, a well-planned airport project requires careful consideration of all these elements to ensure safe, efficient, and sustainable operations.

## ASSESSMENT PATTERN

**CIE- Continuous Internal Evaluation (30 Marks)**

**SEE- Semester End Examination (20 Marks)**

**SEE- Semester End Examination (40 Marks) (should be converted in actual marks (20))**

Bloom's Category	Tests
Remember	05
Understand	07
Apply	08
Analyze	07
Evaluate	08
Create	05

**CIE- Continuous Internal Evaluation (100 Marks) (should be converted in actual marks (30))**

Bloom's Category Marks (out of 100)	Lab Final (30)	Lab Report (10)	Continuous lab performance (30)	Presentation & Viva (10)	External Participation in Curricular/ <b>Final Project Exhibition</b> (10)
Remember/ <b>Imitation</b>	05		05	02	Attendance 10
Understand/ <b>manipulation</b>	05	05	05	03	
Apply/ <b>Precision</b>	05		05		
Analyze/ <b>Articulation</b>	05		05		
Evaluate/ <b>Naturalisation</b>	05	05	05		
Create	05		05	05	